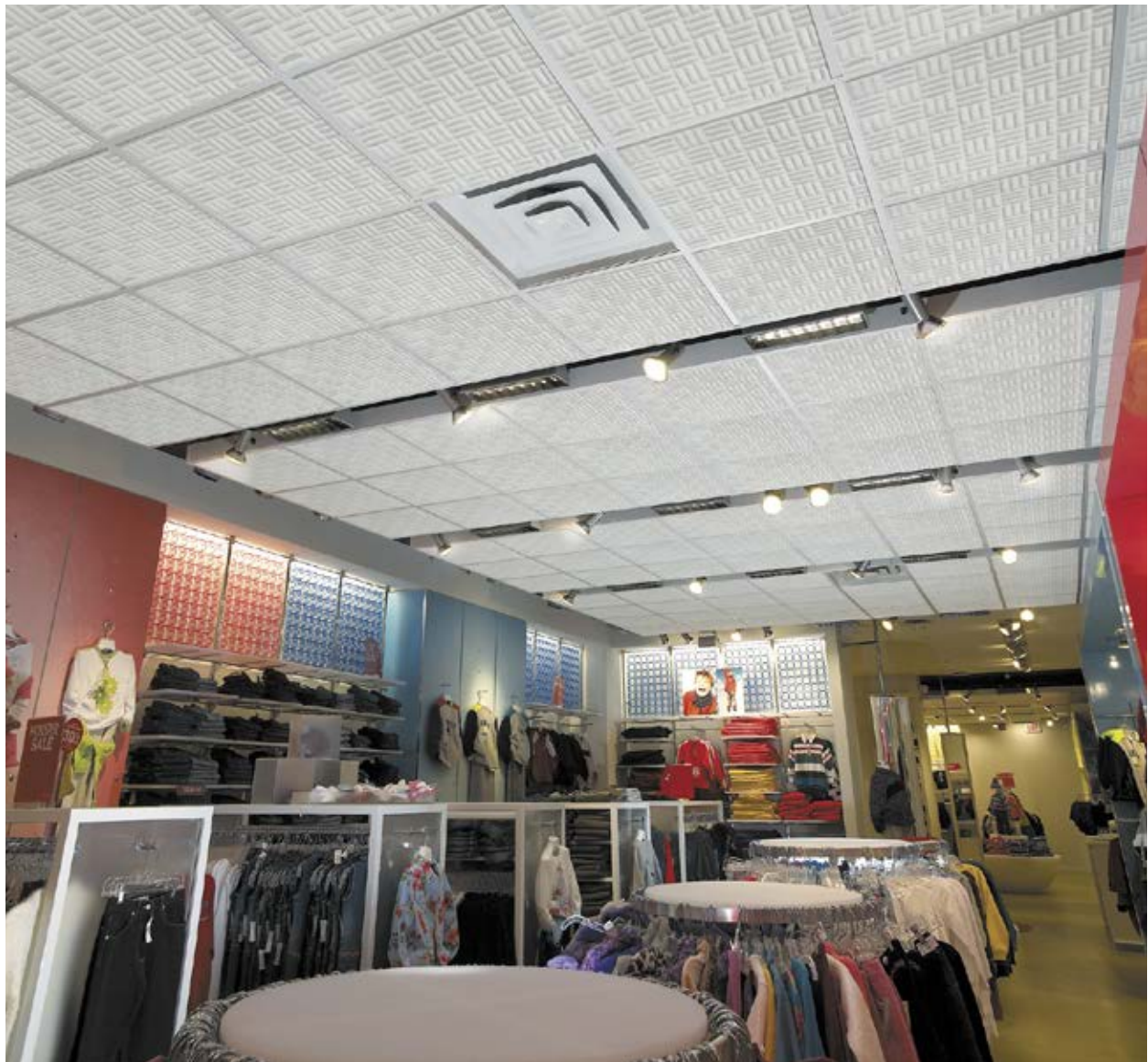


HARMONI Ceiling Tiles

Product Information



HARMONI suspended acoustic ceiling panels are the natural choice when you're looking to create a unique, contemporary interior space with excellent sound absorption at an economical price. The panels are made from lightweight, non-fibrous, open-cell expanded melamine WILLTEC™ foam and have a 1/2" (13 mm) tegular edge. Smooth-surface HARMONI Vista panels and the lightly sculpted surface pattern of HARMONI Tartan panels are produced to suit typical 15/16" (24 mm) grid system. HARMONI Ceiling Tiles are readily available in a variety of standard and custom water-based acoustic coating color finishes.

>> Advantages

- Smooth or softly sculpted panel faces
- Superior sound absorption NRC rated 0.95
- Standard, premium and custom water-based acoustic color coating option

2601 49th Avenue North, Suite 400
Minneapolis, MN 55430
+1 612-355-4200
1-800-662-0032
sales@pinta-acoustic.com
www.pinta-acoustic.com

HARMONI Ceiling Tiles

Product Information

Material

HARMONI Ceiling Tiles are made from pinta's lightweight, open-cell, non-fibrous WILLTEC™ expanded melamine foam, which provides excellent acoustical control. HARMONI Ceiling Tiles feature specially formulated water-based acoustic coating color options that increase surface durability and are easy to clean.

Sizes

- Panels: 1/2" (12.7 mm) square tegular edge 2' x 2' (610 x 610 mm) and 2' x 4' (610 x 1219 mm) panel sizes to suit typical 15/16" (24 mm) grid systems
- Thickness: 2" (51 mm)
- Custom options available

Applications

- Hospital and doctor offices
- Modern office and retail spaces
- Lecture halls and classrooms
- Restaurants and cafeterias
- Recreational facilities
- Recording studios and music venues
- Museums and showrooms
- Panel patterns can be intermixed throughout the ceiling

Installation

- Use clean, white, cotton gloves to prevent soiling tiles
- Non-fibrous WILLTEC foam panels are easily cut to fit on-site
- Typical L-angle and 1/2" (13 mm) step moldings suggested for use along perimeter walls
- Edge paint available, if necessary
- Please consult pinta acoustic with any questions prior to your specific project application start



Physical Data—WILLTEC foam

Material	Open-cell, melamine-based foam
Density	0.5 to 0.7 lbs./cu. ft. (ASTM D3574- 77)
Long-Term Service Temperature	302°F (150°C)
Flame Spread and Smoke Density	Passes Class A per ASTM E 84 (all finishes) Meets UL 1715 (WILLTEC natural) Passes CAN ULCS-102
Microbial Growth	Passes UL 181, section 11
Fungus Resistance	Rating 0 per ASTM G21
Finishes	Standard water-based acoustic color coating options in white, light, medium and dark greys, black and other premium or custom color options

Sound Absorption

Finish Thickness	Test ASTM C423-90a							Mounting Type
	125Hz	250Hz	500Hz	1KHz	2KHz	4KHz	NRC	
2" (51 mm) thickness	0.89	0.84	0.78	1.02	1.05	1.00	0.90	E

>> Other Products

- Direct-Apply Ceiling and Wall Panels
- Suspended Ceiling Clouds and Baffles
- Suspended Grid Lay-in Panels
- Barriers, Foam and Composites

2601 49th Avenue North, Suite 400
 Minneapolis, MN 55430
 +1 612-355-4200
 1-800-662-0032
 sales@pinta-acoustic.com
 www.pinta-acoustic.com