

PHONSTOP™ Ceiling and Wall Tile Product Information



PHONSTOP Ceiling and Wall Tiles are made from 100 percent recycled glass, sintered to form rigid, lightweight and porous sound absorbers. PHONSTOP products have exceptional acoustical properties and are easy to install indoors or outdoors.

>> | Advantages

- Made from 100 percent recycled glass
- Exceptional acoustical properties
- Two styles: adhere to walls and ceilings or lay-in standard 15/16" ceiling grid system
- PHONSTOP Plaster provides a seamless appearance
- Can be custom colored using an acoustical coating

2601 49th Avenue North, Suite 400
Minneapolis, MN 55430
Toll-Free 1-800-662-0032
Tel.: +1 (612) 355-4200
sales@pinta-acoustic.com
www.pinta-acoustic.com

PHONSTOP™ Ceiling and Wall Tile Product Information

Material

PHONSTOP Ceiling and Wall Tiles are made from 100 percent recycled glass sintered to form rigid, lightweight and porous sound absorbers. Tiles are ASTM 84 Class 1 (A) fire-rated and offered for adhesive (PHONSTOP V) and lay-in ceiling grid (PHONSTOP E) applications. Other PHONSTOP products include:

- PHONSTOP pa81 Adhesive (pa81 for concrete, masonry and drywall)
- PHONSTOP pa85 Plaster (for seamless, monolithic appearance)
- PHONSTOP pt17 Primer
- PHONSTOP pt13 Sealer (for weather-exposed conditions)

Size

PHONSTOP V—adhesive applications on walls and ceilings

- 24" x 24" x 2" thickness (610 x 610 x 50 mm)
- 24" x 48" x 2" thickness (610 x 1220 x 50 mm)
- Tiles offer two edge options: One face of the tiles feature 3/8" (9 mm) chamfer beveled edges, while the reverse face has square edges.

PHONSTOP E—ceiling grid applications

- 24" x 24" x 1" thickness nominal (604 x 604 x 25 mm)
- 24" x 48" x 1" thickness nominal (604 x 1213 x 25 mm)
- Slightly beveled square edge

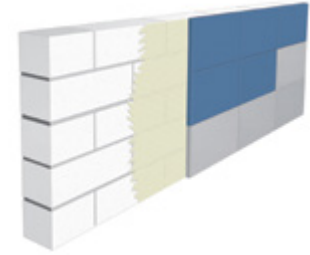
Physical Data

Material	100% recycled glass
Density (ASTM D1622-08)	16.79 lbs./ft ³
Fire Resistance (ASTM E 84)	Class 1
Flame Spread (ASTM E 84)	0
Smoke Density (ASTM E 84)	0
Compression Strength (ASTM D1621-04)	165 psi
Thermal Resistance (ASTM C518-04)	Effective R value 3.24

Installation

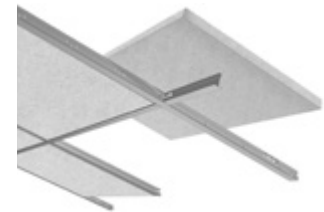
PHONSTOP V

- Adheres directly to walls or ceilings
- Roll on PHONSTOP pt17 Primer to existing substrate. Apply PHONSTOP pa81 Adhesive using 3/8" tooth trowel to the back of each tile (be careful not to get adhesive on the visible tile face)
- Create a seamless, monolithic appearance by using the square edge tile face and rolling on a layer of PHONSTOP pt17 Primer; then trowel two layers of PHONSTOP pa85 Plaster*
- Can be custom colored for interior applications using an acoustical coating*
- In outdoor, weather-exposed conditions, apply PHONSTOP Sealer for added durability



PHONSTOP E

- Lay-in any standard 15/16" ceiling grid system



Sound Absorption

Description	Frequency (Hz)						NRC
	125	250	500	1,000	2,000	4,000	
PHONSTOP V— Test ASTM C423-90a; Mounting Type A							
Thickness 2" (50 mm), adhered and coated	0.14	0.60	1.09	0.96	1.02	1.03	0.90
Thickness 2" (50 mm), adhered without space between tiles	0.16	0.63	1.15	0.91	0.98	0.99	0.90
Thickness 2" (50 mm), adhered and plastered	0.26	0.75	0.86	0.62	0.66	0.57	0.70
PHONSTOP E— Test ASTM C423-90a; Mounting Type E							
Thickness 1" (25 mm)	0.45	0.55	0.60	0.75	0.80	0.85	0.70

*Plaster and acoustical coating may only be applied by a certified applicator.

>> Other Products

- Wall Panels
- Ceiling Tiles
- Baffles
- Barriers, Foams and Composites

2601 49th Avenue North, Suite 400
Minneapolis, MN 55430
Toll-Free 1-800-662-0032
Tel.: +1 (612) 355-4200
sales@pinta-acoustic.com
www.pinta-acoustic.com