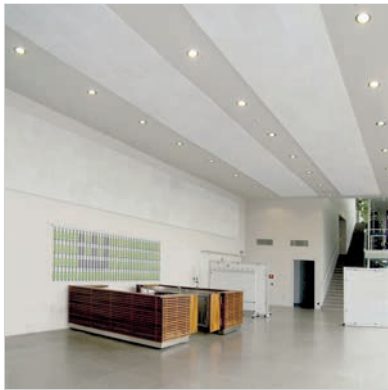


LEED® Credit Statement

LEED-NC and LEED for Schools Credit for pinta acoustic products



Committing to the sustainability and improvement of the world is an expectation from industry leaders in the architectural market. pinta acoustic is proud to take part by manufacturing acoustical wall and ceiling products that provide architects and building owners with LEED credits for their new construction and school projects.

pinta acoustic strives to minimize environmental impact as much as possible by offering sustainable, innovative and high-performance solutions for today's buildings and facilities. For this reason, we have chosen the Minneapolis Business Center, an urban green development, as the location of our Minneapolis manufacturing plant, offices and showroom. This building is a Brownfield redevelopment in an urban area. It offers excellent infrastructure, such as public transportation, and green building features.

Products outlined per the LEED Green Building Rating System for New Construction and Major Renovation (LEED-NC) Version 2.2. All statements pertain also to LEED for Schools.

LEED-NC Energy and Atmosphere

Credit 1 Optimized Energy Performance

The reflective surfaces of white fleece, natural white melamine foam or white HPC® coating may help reduce the number of light fixtures and related energy costs.

Products and Supporting Data:

- WHITELINE® Ceiling Tiles
(white fleece laminated on both sides)
ASTM E1477, Light reflectance = 0.89
- CONTOUR® Ceiling and Wall Tiles
(white HPC-coated)
ASTM E1477, Light reflectance = 0.87
- HARMONI Ceiling Tiles
(white HPC-coated)
ASTM E1477, Light reflectance = 0.87
- SONEX® Rondo Baffles
(natural white melamine foam)
ASTM E1477, Light reflectance = 0.87
- SONEX One and Valueline Panels and Baffles
(natural white melamine foam or white HPC-coated)
ASTM E1477, Light reflectance = 0.87
- SONEX Classic, Junior, Mini and Pyramid Panels
(natural white melamine foam or white HPC-coated)
ASTM E1477, Light reflectance = 0.87
- WHISPERWAVE™ Panels, Baffles, Ceiling Clouds and Awnings
(natural white melamine foam or white HPC-coated)
ASTM E1477, Light reflectance = 0.87
- SONEX® Linear and PLANO Absorbers
(natural white melamine foam or white HPC-coated)
ASTM E1477, Light reflectance = 0.87

LEED-NC Materials and Resources

Credits 2.1 and 2.2

Construction Waste Management

Products manufactured by pinta acoustic can be recycled by pinta acoustic.

Products:

- WHITELINE Ceiling Tiles
- CONTOUR Ceiling and Wall Tiles
- HARMONI Ceiling Tiles
- PHONSTOP™ Ceiling and Wall Tiles
- SONEX Rondo Baffles
- SONEX One and Valueline Panels and Baffles

- SONEX Classic, Junior, Mini and Pyramid Panels
- WHISPERWAVE Panels, Baffles, Ceiling Clouds and Awnings
- SONEX Linear and PLANO Absorbers

pinta acoustic's products can be factory-cut to size, reducing field-cutting and scrap.

Products:

- WHITELINE Ceiling Tiles
- CONTOUR Ceiling and Wall Tiles
- HARMONI Ceiling Tiles
- SQUARELINE® Metal Ceiling Tiles
- FABRITEC Wall Panels
- SONEX Rondo Baffles
- SONEX One and Valueline Panels and Baffles
- SONEX Classic, Junior, Mini and Pyramid Panels
- PHONSTOP Ceiling and Wall Tiles
- WHISPERWAVE Panels, Baffles, Ceiling Clouds and Awnings
- SONEX Linear and PLANO Absorbers

Credits 4.1 and 4.2

Recycled Content

pinta acoustic's products are made from recycled content.

Products:

- SQUARELINE Metal Ceiling Tiles
Expanded metal—35% – 55% postindustrial recycled content, by weight
- FABRITEC Wall Panels
Fabric, polyester—100% recycled content
- PHONSTOP Ceiling and Wall Tiles
100% postconsumer recycled glass

LEED® Credit Statement

LEED-NC and LEED for Schools Credit for pinta acoustic products



LEED-NC Indoor Environmental Quality

Credits 3.1 and 3.2

Construction IAQ Management Plan

pinta acoustic's products contain extremely low levels of VOCs (volatile organic compounds), do not contribute to air pollution and do not release dust or fibers. These products are fabricated off-site to reduce on-site cutting and finishing.

Products:

- WHITELINE® Ceiling Tiles
- CONTOUR® Ceiling and Wall Tiles
- HARMONI Ceiling Tiles
- SQUARELINE® Metal Ceiling Tiles
- FABRITEC Wall Panels
- SONEX® Rondo Baffles
- PHONSTOP™ Ceiling and Wall Tiles
- SONEX One and Valueline Panels and Baffles
- SONEX Classic, Junior, Mini and Pyramid Panels
- WHISPERWAVE™ Panels, Baffles, Ceiling Clouds and Awnings
- SONEX Linear and PLANO Absorbers

Credit 4.1

Low-emitting Materials, Adhesives and Sealants

pinta acoustic's adhesives and sealants contain extremely low levels of VOCs (volatile organic compounds) and do not contribute to air pollution.

Products:

- acouSTIC Adhesive
Contains no VOCs

Credits 8.1 and 8.2

Daylight and Views

pinta acoustic's products have high light reflectance ratings, allowing daylight to penetrate farther into finished spaces.

Products and Supporting Data:

- WHITELINE Ceiling Tiles
(white fleece laminated on both sides)
ASTM E1477, Light reflectance = 0.89
- CONTOUR Ceiling and Wall Tiles
(white HPC-coated)
ASTM E1477, Light reflectance = 0.87
- HARMONI Ceiling Tiles
(white HPC-coated)
ASTM E1477, Light reflectance = 0.87
- SONEX One and Valueline Panels and Baffles
(natural white melamine foam or white HPC-coated)
ASTM E1477, Light reflectance = 0.87
- SONEX Classic, Junior, Mini and Pyramid Panels
(natural white melamine foam or white HPC-coated)
ASTM E1477, Light reflectance = 0.87
- WHISPERWAVE Panels, Baffles, Ceiling Clouds and Awnings
(natural white melamine foam or white HPC-coated)
ASTM E1477, Light reflectance = 0.87
- SONEX Linear and PLANO Absorbers *(natural white melamine foam or white HPC-coated)*
ASTM E1477, Light reflectance = 0.87

LEED® Credit Statement

LEED-NC and LEED for Schools Credit for pinta acoustic products



LEED-NC Innovation and Design Process

Credit 1.1

Innovation in Design

pinta acoustic's products are extremely lightweight, reducing transportation energy and structural load on the building.

Products:

- WHITELINE® Ceiling Tiles
- CONTOUR® Ceiling and Wall Tiles
- HARMONI Ceiling Tiles
- SONEX® Rondo Baffles
- SONEX One and Valueline Panels and Baffles
- SONEX Classic, Junior, Mini and Pyramid Panels
- WHISPERWAVE™ Panels, Baffles, Ceiling Clouds and Awnings
- SONEX Linear and PLANO Absorbers

The high acoustic performance of pinta's products helps create safer and more efficient environments through reduction of unwanted noise and reverberation.

Products:

- WHITELINE Ceiling Tiles
- CONTOUR and Wall Ceiling Tiles
- HARMONI Ceiling Tiles
- SQUARELINE® Metal Ceiling Tiles
- FABRITEC Wall Panels
- PHONSTOP™ Ceiling and Wall Tiles
- SONEX Rondo Baffles
- SONEX One and Valueline Panels and Baffles
- SONEX Classic, Junior, Mini and Pyramid Panels
- WHISPERWAVE Panels, Baffles, Ceiling Clouds and Awnings
- SONEX Linear and PLANO Absorbers

LEED Credit for School Indoor Environmental Quality

EQ Prerequisite 3

Minimum Acoustical Performance

pinta acoustic's products can help to achieve the acoustical requirements of ANSI 12.60 – 2002.

Products:

- WHITELINE Ceiling Tiles
- CONTOUR Ceiling and Wall Tiles
- HARMONI Ceiling Tiles
- SQUARELINE Metal Ceiling Tiles
- FABRITEC Wall Panels
- PHONSTOP Ceiling and Wall Tiles
- SONEX Rondo Baffles
- SONEX One and Valueline Panels and Baffles
- SONEX Classic, Junior, Mini and Pyramid Panels
- WHISPERWAVE Panels, Baffles, Ceiling Clouds and Awnings
- SONEX Linear and PLANO Absorbers
- PROSPEC® Barriers, Foam and Composites