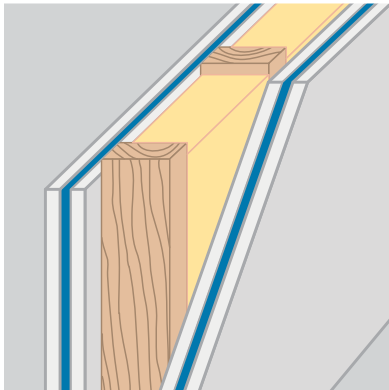


## pinta PROSPEC Decibel Drop™ Product Information



PROSPEC Decibel Drop, a high-performance viscoelastic damping compound, decreases the sound traveling to adjacent rooms. It is easy to install between layers of drywall, plywood or subflooring in new and retrofit applications. PROSPEC Decibel Drop is ideal for use in commercial, broadcast/audio, home theater and multifamily interior spaces.

### >> Advantages

- Decreases sound traveling to adjacent rooms
- Offers exceptional damping properties
- Superior performance in low frequencies
- Easy to install between drywall layers
- Class 1 fire-rated

2601 49th Avenue North, Suite 400  
Minneapolis, MN 55430  
Toll-Free 1-800-662-0032  
sales@pinta-acoustic.com  
www.pinta-acoustic.com

### Material

PROSPEC Decibel Drop is a high-performance viscoelastic damping compound. It provides an economical solution for reducing sound transmission into adjacent areas. Each case contains 12 29-oz. cartridges.

### Installation

- Use on walls, floors and ceilings
- Use in new construction or retrofit applications
- Apply 2 to 3 cartridges randomly over the surface of each 4' x 8' (32 sq. ft.) sheet of drywall; no troweling required
- Press drywall to first layer of drywall already installed and screw it to the studs
- Install on one or both sides of the wall
- See installation guide and technical data for more information

### Sound Transmission

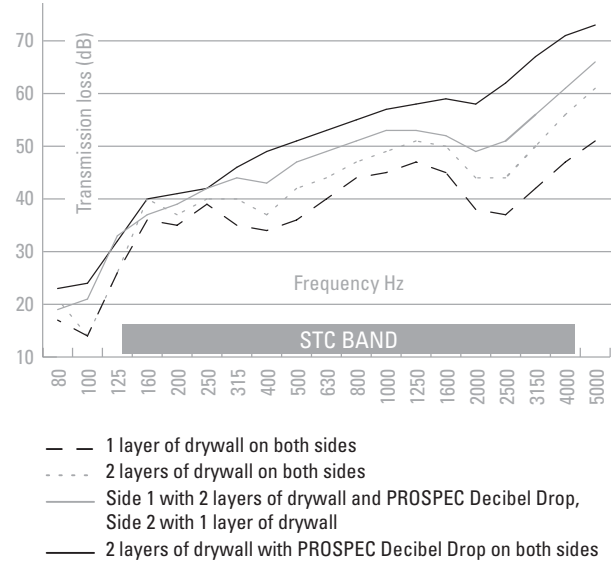
24" OC studs; R13 fiberglass insulation; drywall 5/8"; coverage: 2 cartridges/32 sq. ft.

| STC | Studs          | Sources Side                                  | Receiving Side                                |
|-----|----------------|---|---|
| 50  | Wood           | 2 layers of drywall with PROSPEC Decibel Drop | 1 layer of drywall                            |
| 54  | Wood           | 2 layers of drywall with PROSPEC Decibel Drop | 2 layers of drywall with PROSPEC Decibel Drop |
| 57  | Steel          | 2 layers of drywall with PROSPEC Decibel Drop | 1 layer of drywall                            |
| 62  | Steel          | 2 layers of drywall with PROSPEC Decibel Drop | 2 layers of drywall with PROSPEC Decibel Drop |
| 57  | Staggered wood | 2 layers of drywall with PROSPEC Decibel Drop | 1 layer of drywall                            |
| 62  | Staggered wood | 2 layers of drywall with PROSPEC Decibel Drop | 2 layers of drywall with PROSPEC Decibel Drop |

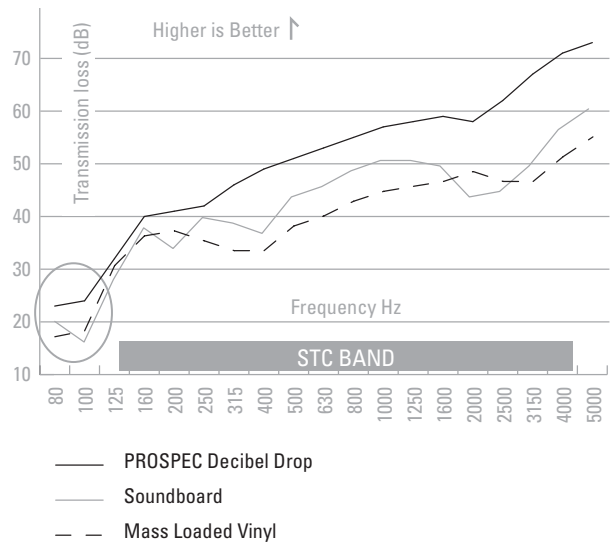
### Physical Data

|                             |                       |
|-----------------------------|-----------------------|
| Fire Resistance             | Class 1 per ASTM E 84 |
| Flame Spread per ASTM E 84  | 15                    |
| Smoke Density per ASTM E 84 | 35                    |

### PROSPEC Decibel Drop's Effect on Wood Stud Wall Assemblies



### The Superior Low-Frequency Isolation of PROSPEC Decibel Drop on Wood Stud Wall Assemblies



## >> Other Products

- Wall Panels
- Ceiling Tiles
- Baffles
- Barriers, Foams and Composites

2601 49th Avenue North, Suite 400  
Minneapolis, MN 55430  
Toll-Free 1-800-662-0032  
sales@pinta-acoustic.com  
www.pinta-acoustic.com